



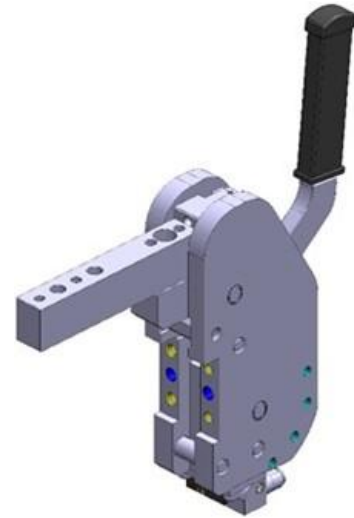
手动夹紧器 MC Hand clamp MC

主要特点:

- 紧凑型设计
- 铁质外壳
- 曲柄连杆机构
- 外部铁臂硬限位
- 多种夹臂可选 V1, V2, V3 和 O1, O2, O3
- 前部安装
- 打开锁定装置
- 电感式接近开关 (连接 M12x1)
- (可选)

Main characteristics:

- Compact design
- Steel body
- Toggle action mechanism
- External arm hard stop
- Versatile steel arms V1, V2, V3 and O1, O2, O3
- Front mounting area
- Opening locking/retention device
- Inductive proximity switch (connection M12x1) (optional)



[PDF](#)



[3D Step](#)



[Index](#)

索引.

Index.

| 页码 Page | 描述 Description | |
|------------|------------------------------|--|
| 1 | 主要特点 Main characteristics | |
| 2 | 订货举例 Ordering example | |
| 3 | 尺寸页码 Dimensional page | MC-V...120 X |
| 4 | | MC-O...120 X |
| 5 | 附件 Accessories | 打开锁定装置 Opening locking/retention device |
| 6 | | 电感式接近开关 Inductive position sensor |
| 7 | 备件 / Spare parts | |
| 8 | 备注 / Notes | |



订货举例.

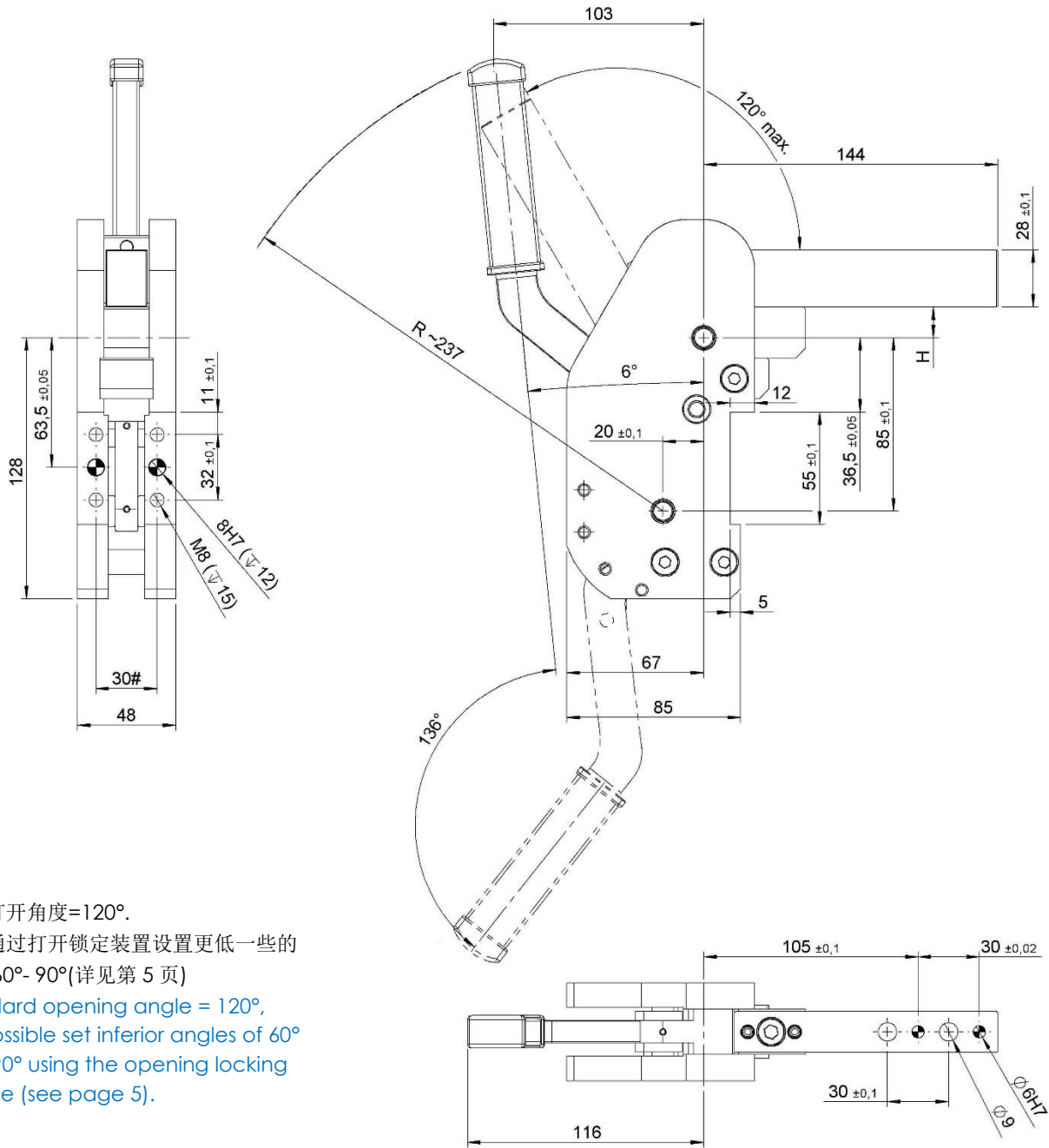
Ordering example.

| | | | | | | | | |
|---|---|--|---|---|---|--|--|-----------|
| MC | - | V1C | - | 120 | - | X | - | XX |
| <p>型号: Model:</p> <p>MC 手动夹紧 Hand clamp</p>  | | <p>打开角度: Opening angle:</p> <div style="border: 1px solid black; padding: 5px; display: inline-block;"> 60° 90° 120° </div> | | <p>打开锁定装置: Opening locking/retention device:</p>  <p>XX: 无锁定装置 Without</p> <p>LD: 带锁定装置在右边 With locking/retention device on right side</p> <p>LS: 带锁定装置在左边 With locking/restriction device on left side</p> <p><small>备注: 该装置必须在 120° 度以外的角度安装</small> <small>Note: this device is obligatory with angles different to 120°</small></p> | | <p>夹臂类型: Type of arm:</p>  <p>XXX: 无夹臂 Without arm</p> <p>V1C: (h 15mm) (h 15mm)</p> <p>V2C: (h 25mm) (h 25mm) (详见第 3 页) (see page 3)</p> <p>V3C: (h 45mm) (h 45mm)</p> <p>O1C: (h 15mm) (h 15mm)</p> <p>O2C: (h 25mm) (h 25mm) (详见第 4 页) (see page 4)</p> <p>O3C: (h 45mm) (h 45mm)</p> <p><small>备注: 可以通过更改夹臂位置便能转变气缸型号 V 型到 O 型.</small> <small>Note: It's possible to transform the clamp type V into the type O simply changing the arm position.</small></p> | <p>接近开关: Proximity switch:</p> <p>X: 无接近开关 Without proximity switch</p> <p>I: VEP 电感式接近开关 Inductive proximity switch VEP</p> <p>P: P&F 电感式接近开关 Inductive proximity switch P&F</p> | |



MC-V...

手动夹紧器. 垂直安装夹臂, 夹臂高度 15/25/45
Manual Clamp, Vertical Arm Offset 15/25/45



标准打开角度=120°.

可以通过打开锁定装置设置更低一些的角度 60°- 90°(详见第 5 页)

Standard opening angle = 120°,
It's possible set inferior angles of 60° and 90° using the opening locking device (see page 5).

#T公差: 定位销孔 ±0.02, 螺纹孔 ±0.1

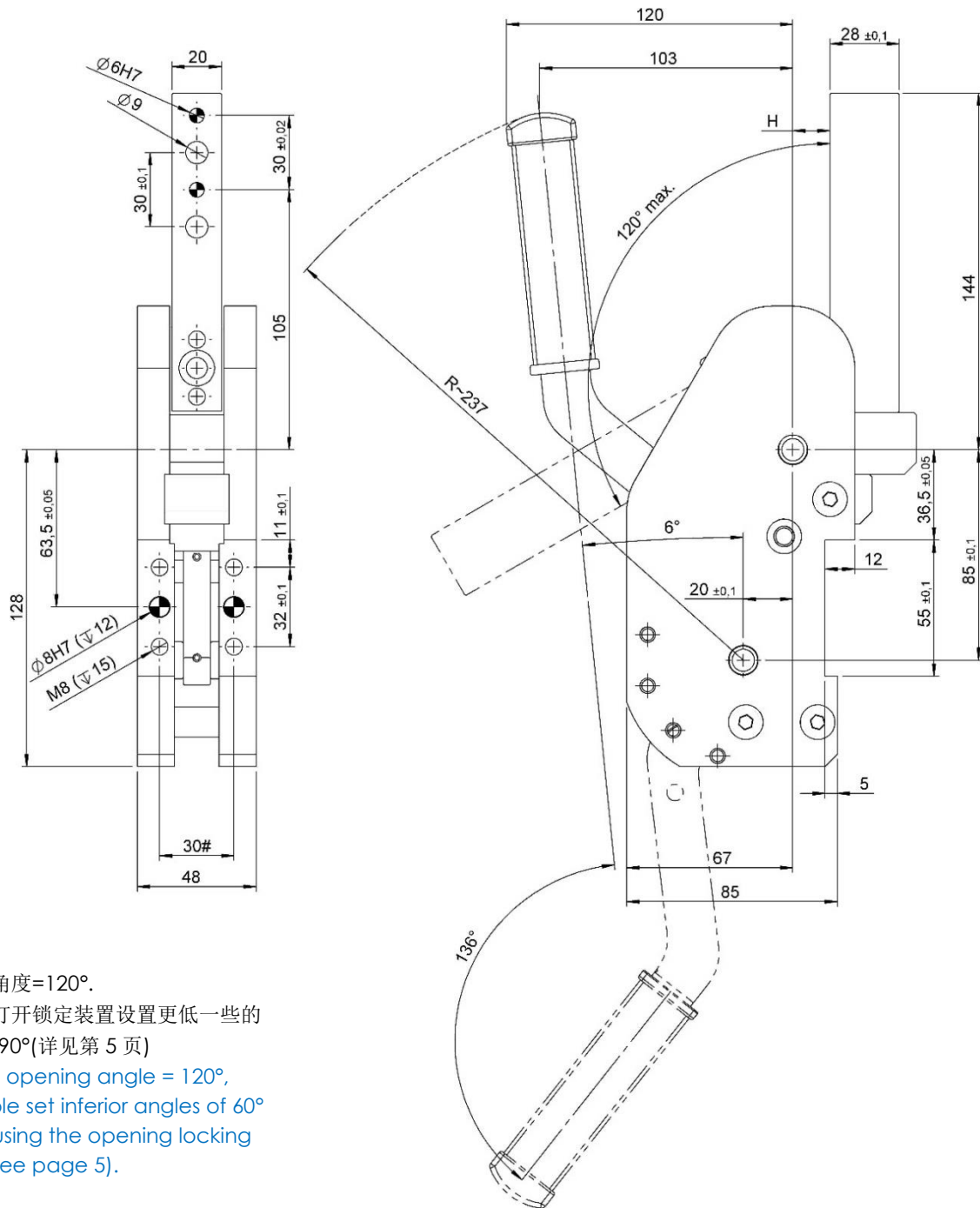
#Tolerances: dowel holes ±0.02, screw holes ±0.1

| 型号 Type | 夹臂高度 | 重量 Weight | 保持力 Holding moment |
|------------|--------|--------------|-----------------------|
| | [mm] | [Kg] | [Nm] |
| MC-V1C... | 15 | 4,3 | 350 |
| MC-V2C... | 25 | | |
| MC-V3C... | 45 | | |



MC-O...

手动夹紧器. 水平安装夹臂, 夹臂高度 15/25/45
Manual Clamp, Horizontal Arm Offset 15/25/45



标准打开角度=120°.

可以通过打开锁定装置设置更低一些的角度 60°- 90°(详见第 5 页)

Standard opening angle = 120°,
It's possible set inferior angles of 60° and 90° using the opening locking device (see page 5).

#T公差: 定位销孔 ±0.02, 螺纹孔 ±0.1

#Tolerances: dowel holes ±0.02, screw holes ±0.1

| Tipo Type | 夹臂高度 | 重量 Weight | 保持力 Holding moment |
|--------------|--------|--------------|-----------------------|
| | [mm] | [Kg] | [Nm] |
| MC-O1C... | 15 | 4,3 | 350 |
| MC-O2C... | 25 | | |
| MC-O3C... | 45 | | |



附件.

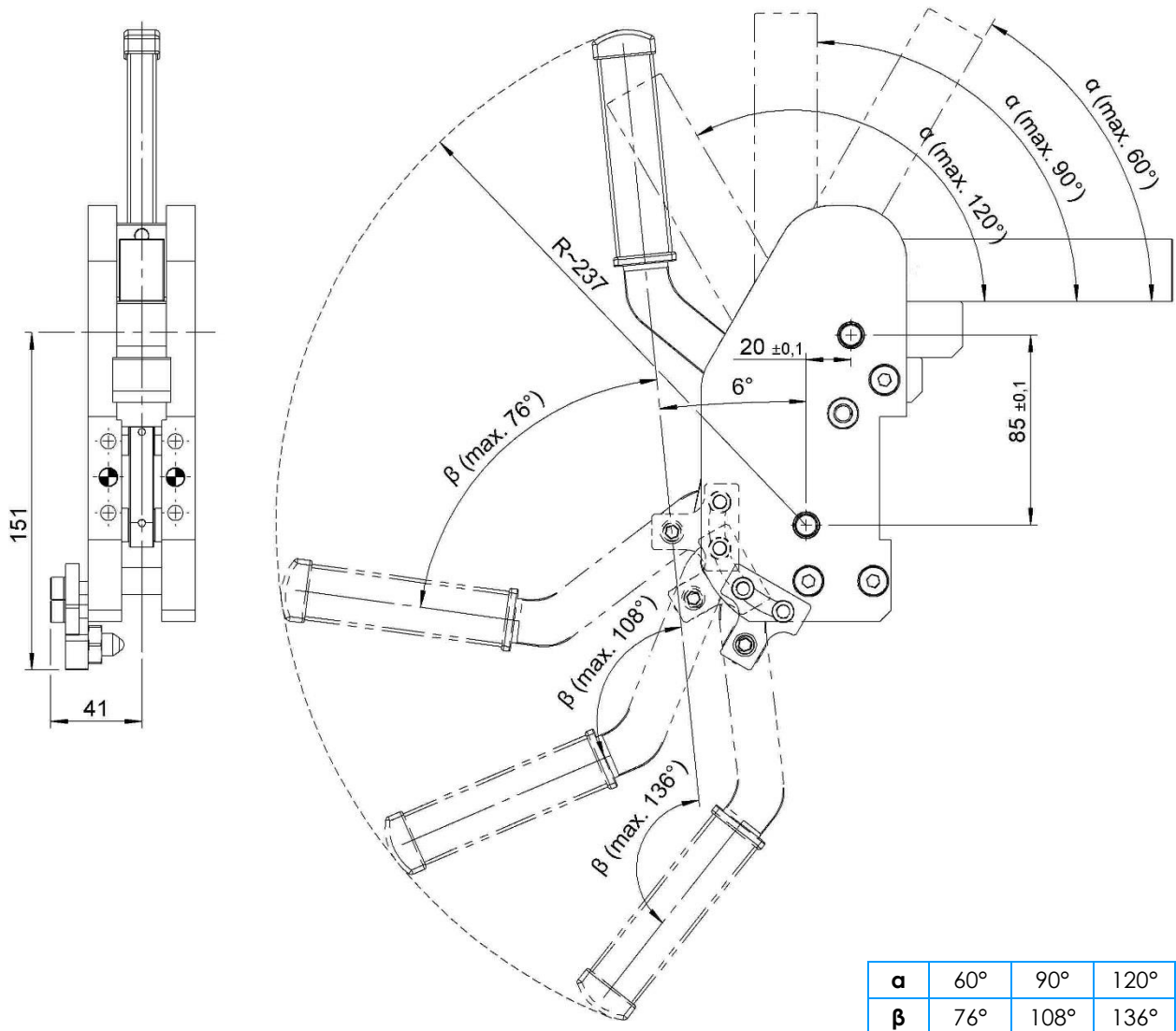
Accessories.

打开锁定装置 (编号 06625/C).

该装置应用在气缸安装面 (左边或者右边) 会限制最大打开角度. (最大打开角度: 120°, 安装装置后最大打开角度: 60°, 90°).

Opening locking device (code 06625/C).

This device applied on the side (right or left) of the clamp limit the max. opening angle. (Max. opening angle: 120°, max. available opening angle: 60° and 90°).

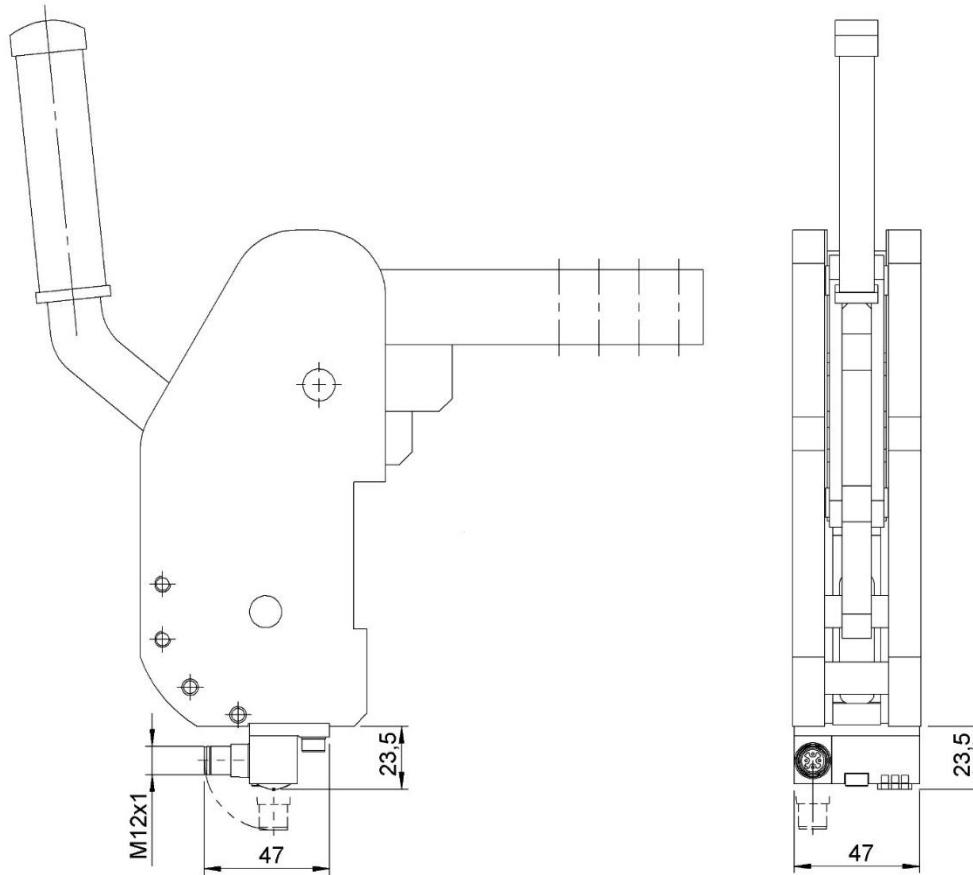




电感式位置传感器 (编号 10350/.../C).
该传感器用于指示设备处于第三点位置.

Inductive position sensor (code 10350/.../C).

The sensor indicates when the device is closed and with the toggle lock system activated.



电感式接近开关原理图(编号 10350/.../C).

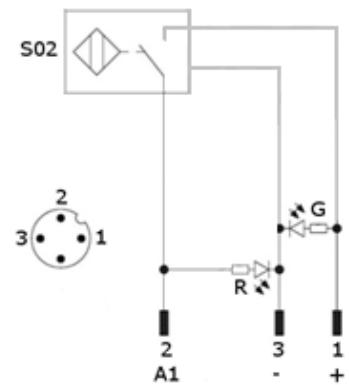
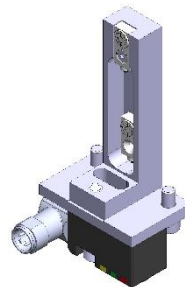
Diagram for M12 inductive proximity switch (cod. 10350/.../C).

技术参数:

- 输出类型: PNP;
- 输入电压: 10-30 VDC;
- 最大换向电流: 150 mA;
- 电源供应: < 20 mA;
- 电压差: < 2 V
- 温度范围: -25°/ 70°C.

Technical data:

- Output type: PNP;
- Feeding voltage: 10-30 VDC;
- Max. commutating current: 150 mA;
- Power supply: < 20 mA;
- Voltage drop: < 2 V;
- Temperature range: -25° / 70° C.



S02 = 夹紧信号

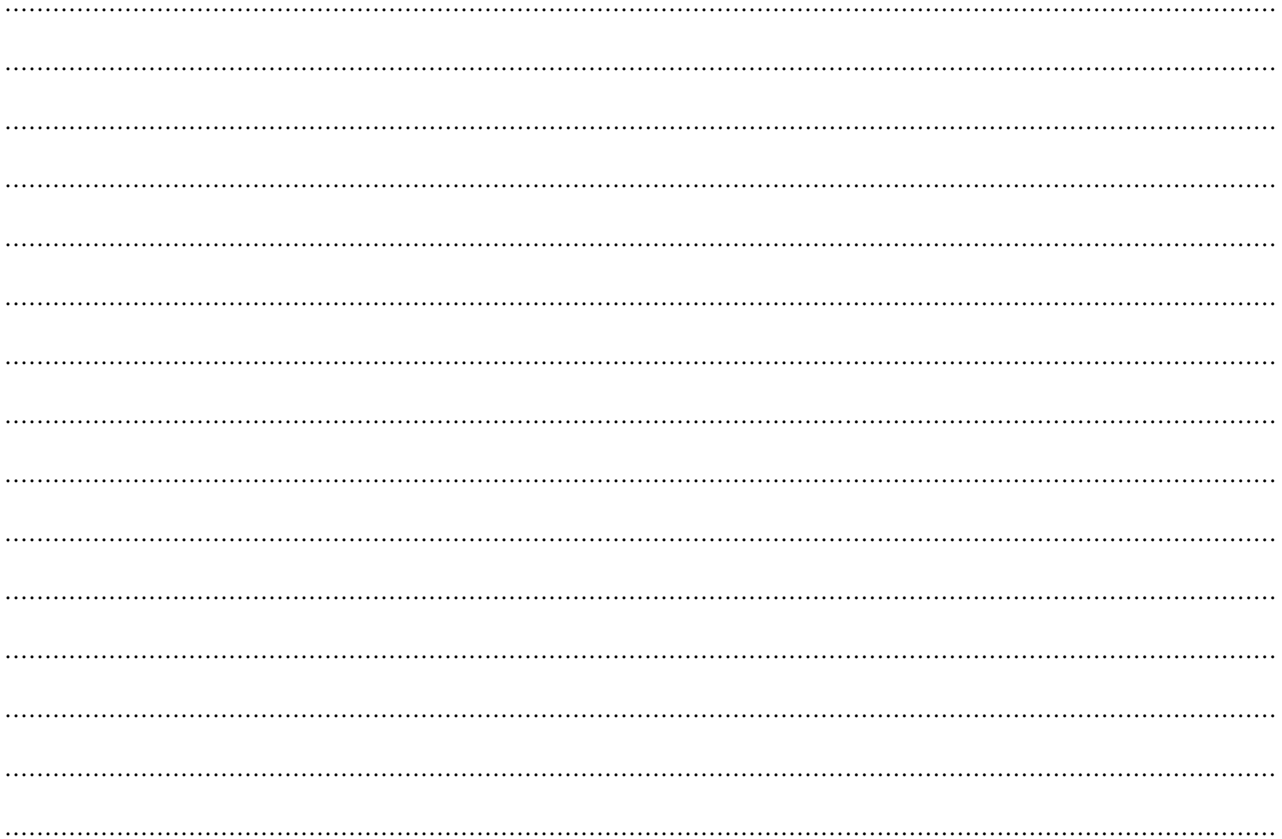
S02 = closing signal

R = 红色 LED / red LED

电源电压

Supply voltage

G = 绿色 LED / green LED



这个目录取消并替换了以前的目录。我们保留在没有任何通知的情况下进行添加或更改的权利。产品目录中的产品是标准的;任何特殊申请的查询都由技术/销售部门评估。完整的文档属于VEP自动化s.r.l, 未经许可, 任何形式的复制都是禁止的。

This catalogue cancels and replaces the previous ones. We reserve the right to make additions or changes without any notice. The products in the catalogue are standard; any enquiry of special applications is evaluated by technical/sales department. The complete documentation belongs to VEP Automation S.r.l. and without permission any kind of reproduction is forbidden.

VEP Automation Headquarters

VEP Automation S.r.l

Via San Felice, 37
10092 Beinasco – Torino (Italy)
Tel. +39 011 3972572
Email: info@vepautomation.it
Web: www.vepautomation.it

VEP Automation Germany

VEP Automation GmbH

Fritz Liebsch Str. 29
D 26723 Emden (Germany)
Tel. +49 04921 450758
Email: info@vepautomation.de
Web: www.vepautomation.de

VEP Automation America

VEP Automation de America S.A. de C.V.

Cráter # 505 Desp. B. - Col. Jardines del Pedregal.
Alcaldía: Álvaro Obregón
01900 CDMX (Ciudad de México)
Tel. +52 55 1718 0929
Email: info@vepautomation.mx
Web: www.vepautomation.mx

VEP Automation China

VEP Automation (Suzhou) Co. Ltd

Room 401, Building No 1, Liando U Valley, No 317
Mudong Road, Mudu Town, Wuzhong District
215156 Suzhou City (China)
Tel.: +86 512 6575 3608
Email: info@vepautomation.cn
Web: www.vepautomation.cn